

Jayco | 2025 Seneca Prestige Super Class C Motorhome



SENECA PRESTIGE

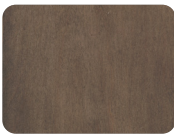
POWER & LUXURY COMBINED





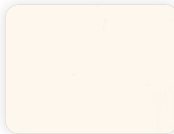
WOOD SELECTIONS

STONEWALL MATTE GREY



Wood

LINEN



Wood

AUBURN MAPLE



Wood

ALMOND MAPLE



Accent

ALMOND MAPLE



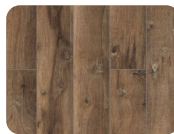
Wood



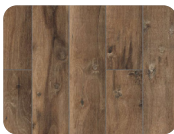
Flooring



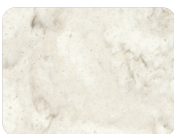
Flooring



Flooring



Flooring



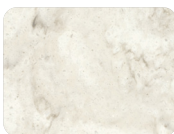
Countertop



Countertop



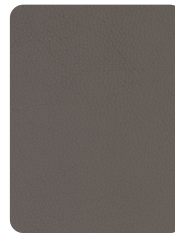
Countertop



Countertop

FABRIC SELECTIONS

WALNUT



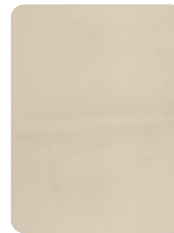
Furniture

BIRCH

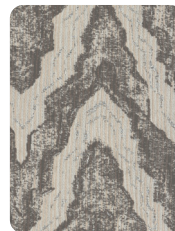


Furniture

ASPEN



Furniture



Main Fabric



Main Fabric




Main Fabric

SENECA PRESTIGE




OPTIONS

A




Hide-a-bed

B



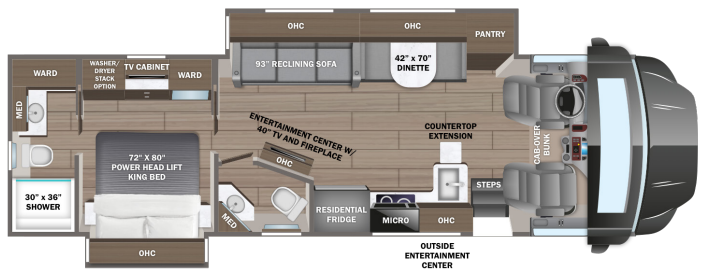
Power Theater Sofa

C

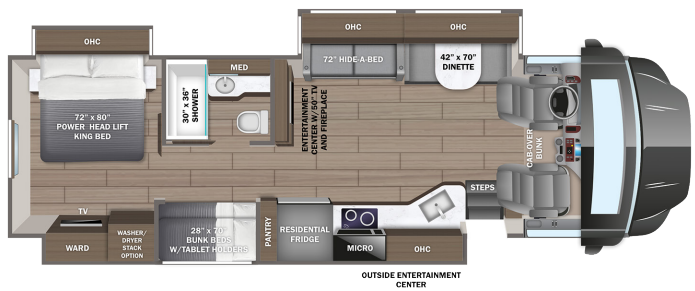


Freestanding Dinette

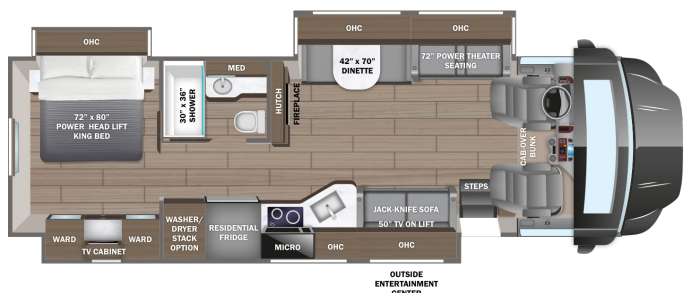
37K **OPTION: C**



37L **OPTION: B**



37M **OPTIONS: A, C**



EXTERIOR SELECTIONS



Beacon Blue Full-Body Paint



Breezy Blue Full-Body Paint



Radiant Silver Full-Body Paint



Rosy Garnet Full-Body Paint

STANDARDS & OPTIONS

CUSTOMER VALUE PACKAGE

JRide® Premium: Computer-balanced driveshaft, rear air suspension, heavy-duty rear stabilizer bar, full air brakes, SACHS shocks
 Dual-pane, tinted, safety-glass windows
 Roof-mounted Girard® patio awning with LED lights
 2,000W pure sine wave inverter
 Power cord reel with 50 amp service
 Aqua-Hot® 250D hydronic water and heating system with 5 in. LED screen
 9 in. Sony® infotainment center with Apple CarPlay® and Android Auto™
 Backup and side-view cameras
 Stainless steel residential refrigerator
 Flush-mounted convection microwave

DRIVING

Freightliner® S2RV Plus front engine diesel Super C cab chassis
 Cummins® ISB 6.7L 360 HP diesel engine with 800 ft.-lb. torque
 Allison® 3000 MH automatic transmission
 Variable geometry engine exhaust brake
 185 amp alternator
 Michelin® tires- 275/80R 22.5 14 ply
 12,000 lb. rear hitch receiver
 7-pin plug
 Dual 12V chassis batteries - 1900 CCA
 100 gal. fuel tank
 10 gal. DEF tank
 6-way power driver and passenger seats
 Auxiliary start switch
 Privacy curtains for cab area
 Color-coordinated carpeted floor mat

EXTERIOR

Anan® 8,000W diesel generator with auto-gen start
 (4) 6V AGM (220Ah) house batteries on slideout tray
 200W solar panel with dual controller
 Dual 15,000 BTU A/C unit with heat pump on main A/C
 5,000 BTU thermostat-controlled electric fireplace
 Thetford® Sani-Con Turbo macerator system
 Exterior utility center
 Winterization drain system
 Black tank flush
 Outside shower
 12V demand water pump
 Water filtration system
 Power windows and door locks
 Tilt and telescoping leather-wrapped steering wheel
 StrongholdVBL™ roof, floor and sidewalls for superior insulation and sound absorption
 One-piece, seamless, crowned fiberglass roof
 Bead-foam insulation (R-24 max roof, R-9 max floor, R-8 max walls)
 One-piece, seamless, fiberglass front and rear caps
 Automotive-bonded panoramic window in front cap with power shade

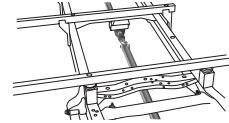
Premium Sikkens full-body paint
 Automatic hydraulic leveling jacks
 Alcoa® aluminum rims
 Exterior entertainment center with outside speakers, LED TV mounted on swivel bracket and AM/FM radio
 Winegard® In-motion satellite dish
 Deluxe heated, remote-controlled, side-view mirrors
 Entrance door with industry's largest travel-view window
 Electric-powered entrance step
 Slideout cover awnings
 Chrome exterior baggage door handles and locks
 Carpeted, full pass-through storage compartments with lockable slam latch doors

INTERIOR

Overhead bunk with 750 lb. capacity and safety net with 300 lb. capacity
 Collapsible bunk ladder
 Firefly Multiplex system offers control of important coach features via LED touchscreen or mobile app
 High-intensity recessed LED ceiling lights
 Raised-panel hardwood cabinetry and stiles throughout
 Deluxe hidden cabinet hinges
 Matte-finish woodgrain porcelain floor tile with heated floor mat
 Day/night roller shades in living area
 Jayco-exclusive, easy-operation legless dinette table
 Car seat tethers on forward-facing dinette seats
 2-point lap safety belts in all designated seating locations
 50 in. LED TV in living area (40 in. on 37K)
 Samsung® sound bar
 Cable TV hookup with RG-6 coax and video selector switch
 Wood-framed kitchen window with spice cabinets
 2-burner induction cooktop with LED display
 Solid-surface kitchen countertop with large integrated stainless steel sink with sink covers
 Walk-around, king-sized bed with bedspread and nightstands
 32 in. Smart LED TV in bedroom
 Large wardrobes
 Bunks with industry-exclusive 300 lb. capacity each (37L)
 One-piece, fiberglass shower with glass door, skylight and light
 Porcelain toilet with foot flush
 Solid-surface bathroom sink
 Powered roof vent in bathroom with wall switch
 Smoke alarm
 Carbon monoxide detector

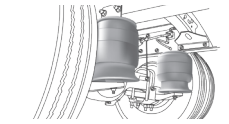
OPTIONS

Power theater seating (37L only)
 Hide-a-bed sofa (37M only)
 Freestanding table with 4 chairs (N/A 37L)
 Stackable washer/dryer
 Starlink satellite internet system
 Winegard® TRAV'LER® satellite dish - DIRECTV®
 Winegard® TRAV'LER® satellite dish - Dish Network®
 Canadian Shaw® TRAV'LER® satellite dish



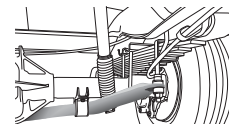
COMPUTER-BALANCED DRIVESHAFT

Ensures smooth and efficient power transfer to the wheels



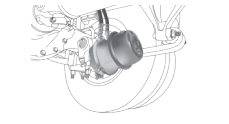
REAR AIR SUSPENSION

Softens ride and improves handling



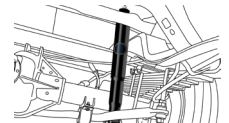
HEAVY-DUTY REAR STABILIZER BAR

A larger bar and polyurethane bushings, instead of rubber, transfer power faster for extra support, more stability and easier handling



FULL AIR BRAKES

Deliver robust stopping power, even on grades



SACHS SHOCKS ABSORBERS

Large diameter tube design pairs gas and hydraulics to resist heat and pressure while independently adjusting to changing road conditions

FLOORPLAN	GVWR (lbs.)	GCWR (lbs.)	WHEEL BASE	OVERALL LENGTH	EXTERIOR HEIGHT WITH SATELLITE AND A/C	EXTERIOR WIDTH	INTERIOR HEIGHT	FRESH WATER CAPACITY (gal.)	GRAY WASTE WATER CAPACITY (gal.)	BLACK WASTE WATER CAPACITY (gal.)
37K	31,000	43,000	279"	39' 4"	13' 4"	101"	84"	72	51/40	40/23
37L	31,000	43,000	279"	39' 4"	13' 4"	101"	84"	72	50/31	50
37M	31,000	43,000	279"	39' 4"	13' 4"	101"	84"	72	40/40	33/23

Meet your Jayco Dealer



Scan QR code for specification definitions

Some specs at the time of print may include estimates. For the most updated information, please visit Jayco.com

Jayco Inc. | P.O. Box 460 | Middlebury, IN 46540

See dealer for further information and prices. All information in this brochure and on www.jayco.com is the latest available at the time of publication approval. Jayco reserves the right to make changes and to discontinue models without notice or obligation. Photography may show optional equipment or props used for decoration purposes only. RVs built for sale in Canada may differ to conform to Canadian codes. JAYCO and the JAYCO BIRD IN FLIGHT are registered trademarks of Jayco, Inc. Printed in USA 10/24 ©2024 Jayco, Inc. 2032962



Jayco - Part of Jayco Family of Companies