

QUALITY

Winnebago RVs are designed and built around you, with superior craftsmanship, advanced manufacturing technologies and steel-focused construction to enhance safety and reliability.

INNOVATION

From groundbreaking RVs to game-changing features to the spacious floorplans made possible by our SmartSpace™ design, our heritage is unrivaled for continuous industry firsts in vehicle technology and design.

SERVICE

Our carefully chosen dealers are supported by factory training and our advanced parts supply system, while owners benefit from excellent real-world customer support as well as 24/7 access to online technical information.



©2022 Winnebago. Printed in USA 09/22

ERA

Tour in style, camp in comfort.

The Era combines a sleek, versatile interior with the latest Mercedes-Benz® Sprinter chassis to create a premium camper van that's right at home anywhere.

Stylish interior, premium materials

Materials like Ultraleather® fabric and Tecnoform® cabinets, plus flexible furnishings like swivel cab seats and removable pedestal table, make the interior attractive and functional.

Mercedes-Benz® Sprinter chassis

With predictable handling and efficient turbo-diesel engine, the Era is built to cover ground. When that ground gets rough, available 4WD helps you get where you're going...and back again.

The comforts of home

The Era has it all: A full galley. Bathroom with sink and shower. And comfortable sleeping options as well as seating for up to seven when it's time to unwind.

Exterior features

Let the breeze in with flush, awning-style windows and sliding screen door, deploy the awning via Bluetooth® app, and kick back with the exterior entertainment center.





Fully equipped for life on the go.

Safety, convenience & comfort

With Mercedes-Benz safety features like blind spot monitoring and collision avoidance, plus the MBUX® infotainment center, you'll arrive relaxed and refreshed.

Efficient heating & cooling systems

When the weather turns, turn to the Truma Combi® Eco Plus heating system or Coleman®-Mach® 10 NDQ air conditioning and dial in to your comfort zone.

Control at your fingertips

Convenient backlit switch panels let you control lighting and major systems from inside, or remotely via smartphone app.

Sleep Solutions

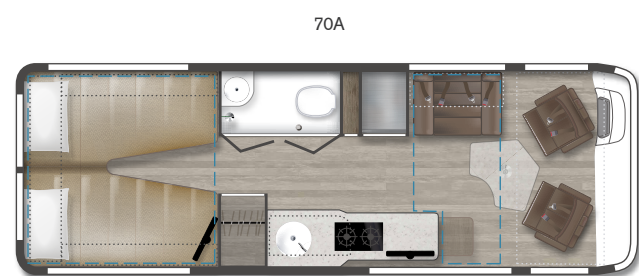
A good night's sleep awaits, whether you opt for a front sofa/bed and rear Flex Bed with FROLI® Sleep System (70A), or the comfortable powered rear sofa/bed (70B, 70X).

Easily accessible storage

The Era maximizes storage space with innovations like below-bed storage or the slide-out rear compartment tray on the 70A. Ideal for storing larger items and gear.

Deluxe Galley

Cook up a storm with the 2- or 3-burner range, compressor-driven refrigerator, microwave or microwave-convection oven, stainless sink and cold-water purification system.



Dotted lines denote overhead storage area. Blue dashed lines denote sleeping areas. Floorplans are representations only and are subject to change. Please contact a certified Winnebago dealer for more information.

WINNEBAGO

ERA / Specifications

WEIGHTS & MEASURES	70A	70B	70X
Length	24'3"	24'3"	24'3"
Exterior Height ¹	9'8"/9'10" ^{AA}	9'8"/9'10" ^{AA}	9'8"/9'10" ^{AA}
Exterior Width	6'4.25"	6'4.25"	6'4.25"
Awning Length	16'	16'	16'
Interior Height	6'3"	6'3"	6'3"
Interior Width	5'9.75"	5'9.75"	5'9.75"
Freshwater Tank Capacity ² (gal.)	25	25	25
Water Heater Capacity (gal.)	2.6	2.6	2.6
Holding Tank Capacity - Black/Gray ² (gal.)	8/26	9/19	9/19
LP Capacity ³ (lbs.)	67.68	67.68	67.68
Fuel Capacity (gal.)	24.5	24.5	24.5
GCWR ⁴ (lbs.)	15,250	15,250	15,250
GVWR (lbs.)	11,030	11,030	11,030
GAWR - Front (lbs.)	4,410	4,410	4,410
GAWR - Rear (lbs.)	7,720	7,720	7,720
Wheelbase	170"	170"	170"

*Quick Recovery Truma Combi® water/coach heater system runs on LP and/or 110-volt electric (includes 2-850-watt heating elements)

^A Optional 4x4 chassis

Mercedes-Benz® Sprinter Chassis

3.0L 6-cylinder, 188-hp, turbo-diesel engine
7G -Tronic automatic transmission, 220-amp. alternator

4-wheel ABS brakes

Stylized aluminum wheels

Trailer hitch⁴ 5,000-lb. drawbar/500-lb. maximum vertical tongue weight

7-pin wiring connector

Spare tire

OPTIONAL EQUIPMENT

On-demand 4WD w/Hi/Lo Range

Cab Conveniences

MBUX® touchscreen multimedia infotainment center w/navigation, Wi-Fi hotspot, intelligent voice control and rear camera

Ultraleather® cab seats armrests, adjustable lumbar support, adjustable headrest, and slide/swivel/recline

3-point seat belts

Dual airbags

Power steering w/tilt and telescoping wheel

Power mirrors w/defrost and turn signal

Power door locks w/remotely

Power windows

12-volt powerpoints

Sunvisors

Folding privacy screens for front cab door windows

Appliqué package

Keyless entry w/remotely

Blind spot monitoring

Collision avoidance system

Traffic sign assist

Crosswind assist

Active brake assist

Interior

24" HDTV (70A swivels for outdoor viewing)

OmniGo™ omni-directional, amplified HDTV antenna

Continuous tracklighting w/dimmer switch

MCD blackout roller shades

Soft vinyl ceiling

Tinted coach windows

Removable companion seats w/swivel and slide (70B, 70X)

Removable pedestal table

Sofa/bed (70A)

Touch screen systems monitor panel

Multiplex lighted wall switches w/master light switch and control via Precision Plex app for Android/iOS

Mirror

USB charging ports

Deluxe powered ventilator fan w/rain cover

OPTIONAL EQUIPMENT

Front cab air mattress 30" x 65" w/support base, cordless pump, repair kit and storage bag

Galley

Flip-up countertop extension (70A)

Corian® solid-surface countertop

Decorative backsplash (70B)

Microwave oven w/touch control (70A)

Microwave convection oven w/touch control (70B, 70X)

2-burner range top w/glass cover (70A)

3-burner range w/glass top and stainless steel sink (70B, 70X)

5.5 cu. ft. (12V) 2-door compressor-driven refrigerator/freezer (70A)

6.0 cu. ft. (12V) 2-door compressor-driven refrigerator/freezer (70B)

4.3 cu. ft. (12V) single door compressor-driven refrigerator/freezer (70X)

Stainless steel sink w/folding faucet and glass cover (70A)

Bamboo sink cover and cutting board (70B, 70X)

Cold water purification system

Bath

Wet bath 24" x 43"

Flexible showerhead

Shower curtain

Toilet w/foot pedal and sprayer

Tissue holder

Stainless steel sink

Powered roof vent

Removable clothing rod

Shower mat

Bedroom

Twin beds w/Flex Bed System (70A)

24" HDTV w/remotely (70A)

Wardrobe (70A)

Powered sofa/bed (70B, 70X)

Deluxe sleep system (70A)

Exterior

Sliding entrance door

Side screen door

Rear screen door

Powered patio awning w/LED lighting

Slideout compartment tray (access from rear door) (70A)

Porch light w/interior switch

Running boards, rocker trim w/mud guard

Rear mud guards

Exterior speaker system

OPTIONAL EQUIPMENT

Luggage rack

Ladder

Heating & Cooling System

Coleman®-Mach® 10 NDQ air conditioner interior shroud w/directional vents

Truma Combi® Eco Plus Heating System w/(2) 850-watt electric heating elements

Electrical System

AC/DC load center/converter

2-deep cycle Group 31 batteries (AGM maintenance free)

Coach battery disconnect system

200-watt solar panel/battery charger

45-amp. converter/charger

30-amp. power cord

Exterior TV jack

Exterior AC/DC receptacles

2,500-watt Cummins Onan® MicroQuiet™ LP generator

1,000-watt Pure Sine Wave inverter

Plumbing System

Exterior Service Center city water hookup/tank diverter valve, drainage valves, sewer hose (w/shut-off 70B, 70X) valve and exterior wash station w/pump switch

TrueLevel™ holding tank monitoring system

Winterization Package water heater bypass valve and siphon tube

On-demand water pump

12-volt macerator sewage pump (70B, 70X)

Permanent-mount LP tank w/gauge

LPG accessory connection

Holding tank flushing system

Safety

Child seat tether anchors (70B, 70X)

LP, smoke, and carbon monoxide detectors

Fire extinguisher

Ground fault interrupter

Daytime running lamps

Warranty⁵

12-month/24,000-mile basic warranty⁶

FOOTNOTES

- The height of each model is measured to the top of the tallest standard feature and is based on the curb weight of a typically equipped unit. The actual height of our vehicle may vary by several inches depending on chassis or equipment variations. Please contact your dealer for further information.
- Capacities are based on measurements prior to tank installation. Slight capacity variations can result due to installation applications.
- Capacities shown are tank manufacturer's listed water capacity (W.C.). Actual filled LP capacity is 80% of listing due to overfilling prevention device on tank.
- Actual towing capacity is dependent on your particular loading and towing circumstances which includes the GVWR, GAWR and GCWR, as well as adequate trailer brakes. Please refer to the Operator's Manual of your vehicle for further towing information.
- See separate chassis warranty.
- See your dealer for complete warranty information.

NA Not Available

Not all items available in combination. See dealer for details.

Because features, specification, equipment, and options may vary from those highlighted in this brochure, the buyer is responsible for confirming with the dealer the features, specifications, equipment, and options included in their specific vehicle. In addition, Winnebago's program of continuous product improvement may result in changes to vehicle specifications, equipment, model availability, and price without notice.

Unless noted, trademarks are the property of Winnebago Industries, Inc. Mercedes-Benz® is the registered trademark of Daimler AG. Bluetooth® is the registered trademark of Bluetooth SIG, Inc. Truma Combi® is a registered trademark of Truma Gerätetechnik GmbH & Co. KG. Corian® is a registered trademark of E.I. DuPont De Nemours and Co. Ultraleather® is a registered trademark of Ultrafabrics, Inc. Coleman® is a registered trademark of Airxcel, Inc. Tecnoform® is a registered trademark of Tecnoform S.p.A. Onan® is a registered trademark of Cummins Power Generators Inc. MCD is a trademark of MCD Innovations. Froli® is the registered trademark of Froli Kunststoffwerk Fromm GmbH.

EXTERIORS



Iridium Silver

Full-body Paint



Tenorite Grey

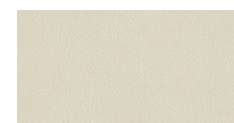
Full-body Paint

DECOR

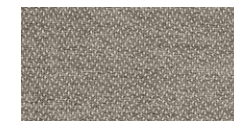
Fusion



Ultraleather



Wall Board



Bed Cover



Countertop



Vinyl Flooring



Wood – Smoke with High Gloss Dark Canvas

Quantum



Ultraleather



Wall Board



Bed Cover



Countertop



Vinyl Flooring



Onyx

